

i-move<sup>®</sup> 2.5B

# Your perfect travel buddy



faster



cleaner



greener



safer

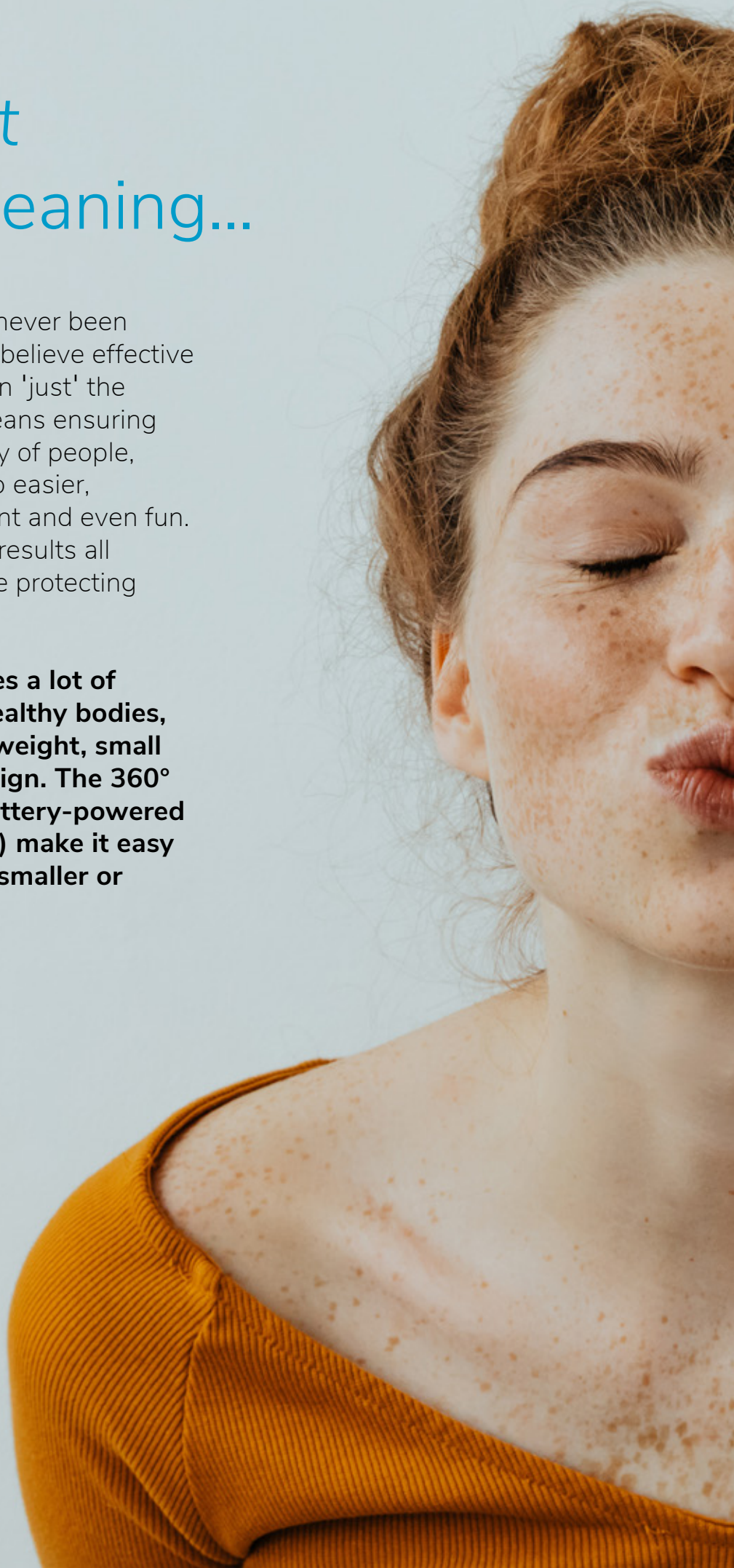


better

# It's not *just* about cleaning...

While cleaning has never been more important, we believe effective cleaning is more than 'just' the removal of soil. It means ensuring the health and safety of people, while making the job easier, simpler, more efficient and even fun. It means consistent results all over the world, while protecting the world.

**i-move 2.5B ensures a lot of happy faces and healthy bodies, thanks to the lightweight, small and ergonomic design. The 360° swivel hose and battery-powered freedom (no cords!) make it easy to move around in smaller or obstructed spaces.**







...It's about *happy*  
& *healthy* people

## Small but fierce

# Compact power

Meet i-move 2.5B, the little brother of i-move 4B. Despite its small design and weight of only 5.28kg (including batteries), the i-move 2.5B has ample power of 250 watts and a quite generous dust bag capacity of 2.5 litres. It's your ultimate little helper in smaller spaces and turns hard to reach places into easy to reach places without a sweat (or sore back). Thanks to the weight and compact design, it's also suitable for smaller framed people.





## Smell you later **A fragrance to love**



Sometimes you have to stop to smell the roses. Value the world around you and enjoy the little things in life. For instance, appreciate a delicious smell that fills the room. With i-scent we introduce a soft, soothing fragrance that you can optionally add to the i-move 2.5B. Bonus: it's eco-friendly.

No need to put your back into it

# Put me on your back

With i-move 2.5B there's no need to put your back into it. Just wear it on your back, turn the power on, and start vacuuming. It's that easy. Thanks to the smart design you can change the dust bag without any hassle. With two easy clicks you open the dust bag compartment to switch bags. You don't even have to remove the hose.

- Batteries with power indicators
- Light weight of 5.28kg
- 360° swivel hose keeps things untangled
- Extendable hose and handle
- Easy click & open system
- 2 filters for extra clean spaces (mainfilter is Class H11)
- Optional cartridge with soothing i-scent
- Nozzle can be used on soft and hard floors
- Remote control power switch

#### **One nozzle to rule them all**

The i-move 2.5B comes with one nozzle that can be used on both hard and soft floors. The hose is antistatic, so you can safely vacuum the carpet.







### I love the smell of clean

You can place the optional i-scent cartridge in the canister and decide if you want the scent spread in a low, medium or high volume. The i-scent fragrance is soft and welcoming, giving any room a pleasant little bit extra.

### Keep me in charge

The small-sized batteries can last up to 50 minutes. The battery indicator conveniently shows you how much power there's left. Make sure to recharge them in time so you can keep enjoying the effortless ease of i-move 2.5B.



### Gentle for any body

The subtle weight of 5.28kg (including batteries) and ergonomic design makes the i-move 2.5B easy to work with. The brand new i-power 8.7 batteries are smaller and lighter than our other batteries. This makes the device also suitable for smaller framed people. The air exits out of the device sideways, so the air won't blow on the cleaner.



### I've got the power

Thanks to battery-powered freedom and the small form of the i-move 2.5B, you can easily move around in smaller spaces. Perfect for places that are usually hard to reach or when there are no sockets nearby.

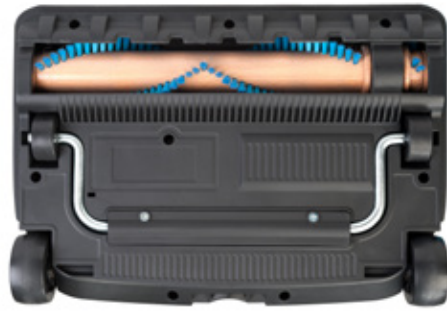
### Flexibility is key

The waistband can easily be adjusted and the power remote comes with a convenient clip. Attach it to your backpack straps, waistband or pocket. Need to reach something? The hose can extend to 1m and the handle can extend from 80cm to 115cm.

### Easy does it

Experience the joy of being freed from sockets and cords. Just place the device on your back, press the power button and start cleaning.





#### **Optional power boost**

Get some extra power to clean heavily soiled surfaces or high pile carpets. The optional i-brush adds a powerful brush motor to your vacuum. It agitates the carpet, loosening dirt and dust. Adjusting between different floor types is easy with the foot pedal. 5 different height adjustments allow you to switch from hard to soft floors and from low pile to high pile carpeting within seconds. The i-brush is battery-powered.

#### **Easy-to-change dust bag**

The dust bag can easily be switched, without removing the hose.







## Faster

Thanks to the battery-powered freedom (no cords!) and small design you can easily and quickly move around small or obstructed spaces. The dust bag is switched within seconds. Open the bag compartment with two clicks and switch bags, no need to remove the hose.



## Cleaner

Hard to reach places turn into easy to reach places with the agile i-move 2.5B. The device has 2 high-quality filters including a H11 Class filter, powerful suction (14 Kpa) and strong dirt pickup at 1100mmHg. Enjoy Cleaner air filtered from large dust and bacterial airborne contaminants.



## Greener

The optional i-scent cartridge releases an eco-friendly fragrance as spaces are being cleaned. The parts can easily be repaired or replaced in case of an accident, which results in a longer lifespan. The batteries can be recharged.



## Safer

The lightweight and ergonomic i-move 2.5B allows you to move with maximum mobility and efficiency. As you wear the device on your back, the weight is evenly distributed across your body. This makes it also suitable for people with a smaller build. Thanks to the cordless design there's no risk of tripping over wires.



## Better for everyone

The i-move 2.5B is your perfect travel buddy when you need quick spot vacuuming or want to vacuum smaller spaces or hard to reach places. It's one of the lightest and smallest back vacuums in the market, especially designed for easy use.

I may be small  
**But I am fierce**



## Technical specifications



Carry weight	4.58 kg (incl 1 batteries, excl. hose+wand) 5.28 kg (incl 2 batteries, excl. hose+wand)
Weight battery	0.70 kg per battery
Body size (l x w x h)	224x214x476mm
Hose length	2 m (stored away 0,5 m)
Capacity	2.5L
Diameter of tools	32 mm
Sound level	72 dBA
Sealing Suction	14.0Kpa
Airflow	1.75 m <sup>3</sup> /min
Application	dry only
Power source	i-power 8.7
Run time	52 min
Current (Max)	9.6A
Power of machine	250W
Motor (Voltage)	28V
Speed adjustment	No
Rotary hose coupling	Yes
Control box	Yes
Charger type	External charger
Battery quantity per charger	4
Charger-time	4.3 hrs in 2A charger 1.7 hrs in 5A charger
Material machine	PP

# Seeing is believing

Schedule a demonstration today  
and discover how i-team can  
revolutionize your cleaning operation.  
We promise you'll be amazed.

---

## i-team Global HQ

Hoppenkuil 27B  
5626 DD Eindhoven  
Netherlands

hello@**i-team**global.com  
+31 (0)40 266 24 00



**i-team**<sup>®</sup>

[i-teamglobal.com](https://i-teamglobal.com)

---

INQUIRE. INNOVATE. INSPIRE